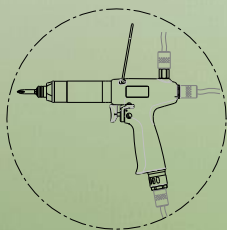


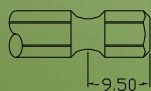


# Pistol Handle Screwdriver

## Auto Shut Off-Trigger Start



With Air Inlets From Three Directions



Bit

**8KP** Hex 6.35mm (1/4")



- Design for comfortable grip
- Unique quickly auto shut-off air, cushion clutch design
- Use ( # 1PH) Philips cross screwdriver from external easily to adjust torque
- Highly trustworthiness design
- Parts designed for lower worn out and longer lifetime
- Variety rpm speed for flexibility choices
- The locking system is suitable for industrial use

Model	Torque Range	Free Speed	Air Consumption	Distance Center to Side	Noise	Air Inlet Thread	Net Weight	Dimension W*H
STK	N-M max.(ft-lbs)	RPM	L/min	mm	dba	PT	g	mm
8KP-2	1.6~ 7.0 (1.2~ 5.2)	1,000	620	15	74	1/4" (TOP INLET 1/8")	910	210*165
8KP-3	1.6~ 8.0 (1.2~ 5.9)	800						
8KP-4	1.6~ 8.0 (1.2~ 5.9)	650						
8KP-5	1.6~ 8.0 (1.2~ 5.9)	500						